

illuminating



Jewellery  
solutions

# LASER CUTTING

## GLS

### TECHNICAL SPECIFICATIONS

Source Type		Fiber
Laser Power		50   100 W
Marking Laser		$\lambda = 1064\text{nm}$ laser ; Class 4 Fiber Laser
Cutting Material		Gold, Silver, Brass
Cutting Area	Gold Sheet	100 x 100 mm
Cutting Area	Gold Strip Roll	Max. 120 mm Width 100 x 100 mm in Single Setup
Gold Sheet Cutting Thickness		Upto 1 mm
Motorized Z - Axis Travel		300 mm
Cooling Method		Air Cooling
Power Supply		230V AC, 50 / 60Hz (Single Phase)
Machine Dimension		L x B x H = 900 x 900 x 1800 mm
Machine Weight (Approx.)		260 kg

\*Technical specifications are subject to change without prior notice



PRODUCE INTRICATE DESIGNS  
WITH OUR LASER CUTTING TECHNOLOGY  
BY KEEPING **YOUR PRECIOUS METAL INTACT**

MINIMUM  
LOSS



INTELLIGENT  
AUTOMATION



CONSISTENT  
QUALITY



# GLX

## TECHNICAL SPECIFICATIONS

Source Type		Fiber
Laser Power		150 W   400 W
Marking Laser		$\lambda = 1064\text{nm}$ laser ; Class 4 Fiber Laser
Cutting Material		Gold, Silver, Brass
Cutting Area	Gold Sheet	200 x 200 mm
Cutting Area	Gold Strip Roll	Max. 150 mm Width 200 x 150 mm in Single Setup
Gold Sheet Cutting Thickness		Upto 3 mm
Motorized Z - Axis Travel		100 mm
Cooling Method		Air Cooling   Water Cooling (External)
Power Supply		230V AC, 50 / 60Hz (Single Phase)
Machine Dimension		L x B x H = 1000 x 1000 x 1800 mm
Machine Weight (Approx.)		300 kg

\*Technical specifications are subject to change without prior notice



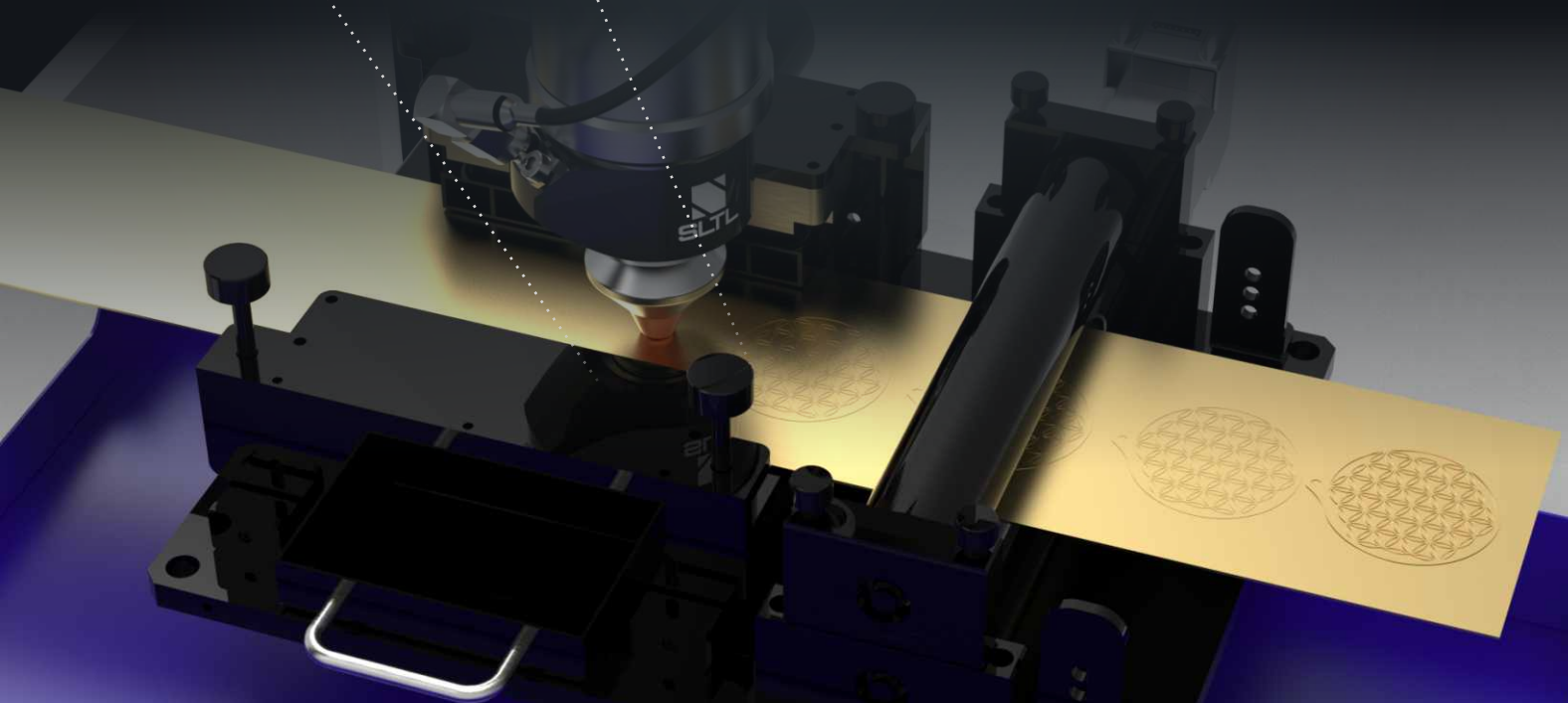
**PROCESS**  
COMPLEX SHAPES



**INTUITIVE**  
SOFTWARE



**EASE OF**  
OPERATION





# LASER CUTTING

## FEATURES

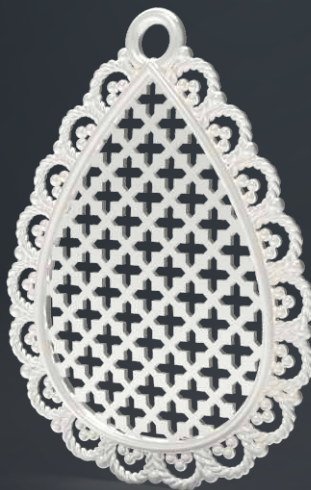
- Metal dust collecting duct for minimal wastage
- Cost effective cutting through thick and thin
- Limitless flexibility in terms of format, power and options
- Maximum dynamics even with complex contours
- Damage control to reuse your leftover precious metal
- Material processing that is gentle on the part
- Clean kerfs and smooth edges for the perfect finish
- Least post cutting treatment required
- Intuitive software for rapid production
- Sturdy and durable for the long lasting perfection
- Compact and portable to save production space
- Productive cutting with reduced non-productive time



## ACCESSORIES

**Fume Extractor | Automation | Safety Goggles | Rotary  
Gold Strip Feeding & Clamping Mechanism | UPS | Isolation Transformer**

Precious metal cutting made easy with SLTL Group's jewellery laser cutting range. Hand-crafted to provide extreme user comfort, our machines are logically designed to enhance your jewellery making experience one step ahead. Our leading edge technology provides flawless appearance for spectrum of precious metals. This sophisticated technology improves your productivity multiple times and it is best suited to produce intricate alluring filigree designs, monograms, personalized shapes and patterns with an elegant finish keeping your precious metal intact.



- Gold wires
- Earrings
- Rings
- Name Monograms
- Pendants
- Brooch
- Bracelets
- Belt Buckles
- Trinkets
- Tiaras
- Anklet
- Crowns
- Armlet

applications



### Gold Collection Unit: Keep your Precious Metals Intact

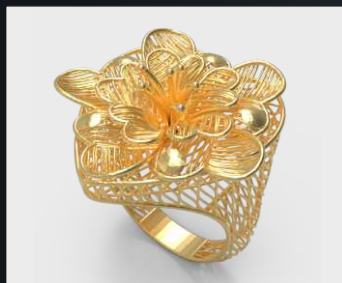
Engineered with cutting-edge technology, the enclosed body is instilled with a dust collection unit which effectively collects and saves extremely fine particles during processing of your precious metal. This smart technology can recover the particles as minute as fumes. Piloted with automation, its powerful mechanism facilitates the user to reduce the wastage and improve the price/performance ratio. A comprehensive solution with sophisticated technology to keep your precious metals intact.

**99.9997%** Efficiency  
for **0.3 micron**

Noise Level  
**< 65 dB**



### Technology Highlights to Create Masterpieces



#### Cut Intricate Designs and Patterns:

Cut intricate designs and patterns as thin as filigree design with high accuracy and perfection. Our smart technology facilitates to cut the thinnest and finest of shapes quickly.



#### Cutting of Complex Shapes and Contours:

Cut complex shapes and designs with seamless finish and neat look. Customization of jewellery with avant-garde shapes and contours is possible with our intelligent technology.



#### Cutting of Pendants and Monograms:

Cut elegant designs on pendants and monograms and curate a classic masterpiece with clean kerfs and sleek finish. Carve dainty patterns on the thinnest of precious metal.



#### Personalize Modish Accessories:

Create personalized accessories with the sophisticated technology in real-time. Create custom designs on precious metal of varying thickness and density.

# LASER MARKING

## ELITE & NEO TECHNICAL SPECIFICATIONS

		ELITE	NEO	
	Unit		Without Table	With Table
Laser		Multimode Pump Diode Fiber Laser	Multimode Pump Diode Fiber Laser	
Laser Power	W	20   30   50	20   30   50   100	
Mode of Operation		Pulsed	Pulsed	
Max. Peak Power	kW	>7.5	>7.5	
Operating Temperature		Up to 40 °C	Up to 40 °C	
Lens		F - Theta	F - Theta	
Wave Length	nm	$\lambda = 1060 \pm 10$	1060 $\pm 10$	
Marking Area	mm	150 x 150 / 100 x 100 / 70 x 70 (Optional)	180 x 180 / 150 x 150 / 100 x 100 / 70 x 70 (Optional)	
Repeatability	micron	$\leq 80$	$\leq 80$	
Beam ( $\emptyset$ )**	micron	30 - 60	30 - 60	
Working Area	mm	300 x 200	320 x 320	450 x 320
Overall Size (L*B*H)	mm	850 x 500 x 700	550 x 550 x 620	550 x 550 x 1500
Gross Weight	kg	65	35	100
Z-Axis Travel (Motorized)	mm	80	300	
Maximum Job Load	kg	10	100	
Software		Mark-Pro	Mark-Pro	

\*Technical specifications are subject to change without prior notice

\*\* Beam size depends on lens.



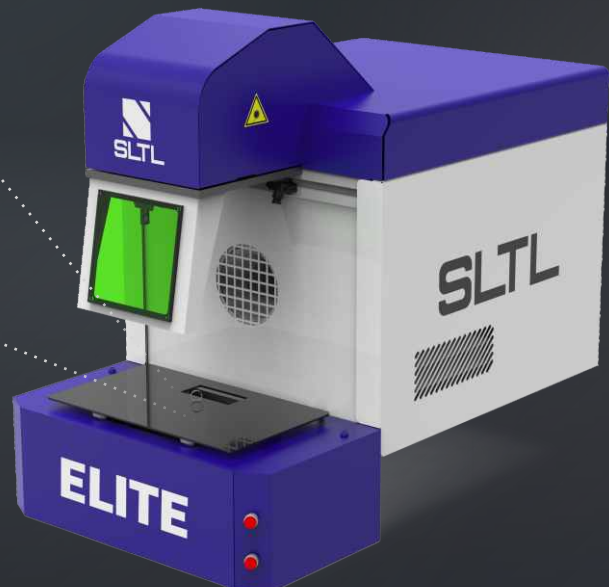
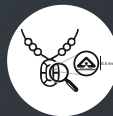
TTL  
TECHNOLOGY



HIGHEST  
VISIBILITY



SMALLEST  
PRINTING



“ WITH A **SMART CAMERA VIEW**,  
OBSERVE & MANOEUVRE  
THE MINUTE DETAILING. ”



## FEATURES

- Maximum marking precision for high repeatability
- Material processing that is gentle on the part
- Easy marking on complex shapes and surfaces
- Advanced technology for high perfection and precision
- Portable, sturdy & saves production space
- High flexibility with para matrix & para vault
- High quality and reliability

- Ideal for a wide variety of materials
- High marking precision for ultra-fine structures
- Ergonomic and easy to use
- Intuitive software for rapid production
- Sturdy and durable for long lasting perfection
- Maximum dynamics even with complex contours
- High performance with shorter processing times

## ACCESSORIES

Vision System | Fume Extractor | Foot Switch  
Safety Goggles | UPS | Isolation Transformer | Rotary



“ SOPHISTICATED ENGRAVING AND  
INTENDED MARKING WITH  
**UNPARALLELED ACCURACY**  
FOR A FINE LOOK ”

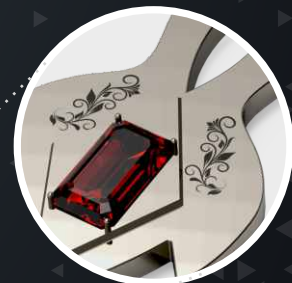
PRODUCTIVITY  
INCREASED



EXCELLENT  
QUALITY



PARA VAULT  
& PARA MATRIX



# LASER WELDING

## ENZO

### TECHNICAL SPECIFICATIONS

Laser Wavelength	1064 nm
Max. Laser Power	200 W
Pulse Width	0.1 - 20 ms
Laser Energy	80 J - 100 J
Pulse Frequency	1-50 Hz
Adjusting scope of light spot	0.6-3 mm
Aim Operation	Cross Bar
Cooling System	Air / Water
Rated Power	5.5 kW
Power Supply	110 v 60 Hz

SLTL Group's laser welding system is equipped to provide thin weld width to craft dainty jewellery. Tiny laser spot can be precisely positioned and easily automated for delicate designs. There is no deformation of the precious metal and the welded surface is smooth & clean to keep the design intact. It does not require excessive post-weld treatment and improved accessibility. The system is intelligently engineered to give unmatched weld strength with no porosity. It is best suited for bezel setting, prong setting, fusing fine designs, repairing jewellery, micro-welding and other applications.

\*Technical specifications are subject to change without prior notice

“ THE ALCHEMY OF APPLIED  
**INTELLIGENCE TO WELD**  
WITH FLAIR ELEGANCE  
ON YOUR CRAFT ”

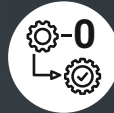
DIVERSE  
APPLICATIONS



HIGH WELD  
STRENGTH



ZERO POST  
PROCESSING



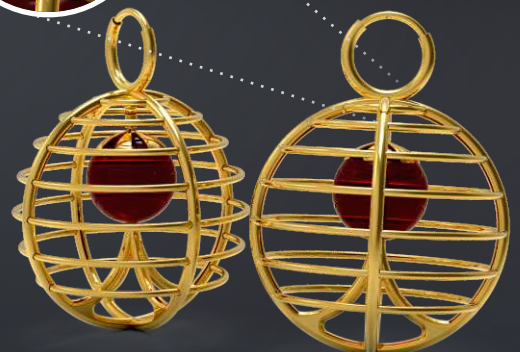
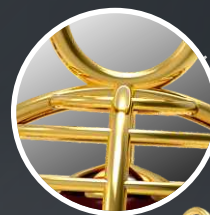
IMPROVED  
ACCESSIBILITY



AESTHETICALLY  
PLEASING WELDS



ENHANCED  
PRODUCTIVITY





## FEATURES

- High quality seams with minimal distortion
- Safe view window to watch the welding directly
- Least post welding treatment required
- Portable, sturdy & saves production space
- Spacious welding area for easy access
- Foot switch control for easy operations
- Low power consumption to reduce overall production cost
- Narrow heat-affected zone for best finish
- Feasible arm support for safer hand held welds
- Repair of settings without removing the stones
- Soldering with smooth finish to aid the breaks
- Improved accessibility with variable configurations

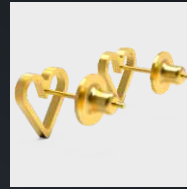
## OPTIONAL ACCESSORIES

Fume Extractor | Automation | Safety Goggles

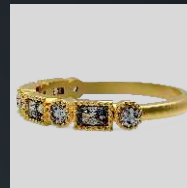
UPS | Isolation Transformer | Rotary



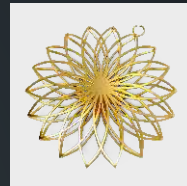
## APPLICATIONS



Bezel Setting



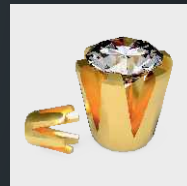
Bracelet Repairing



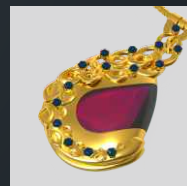
Designer Earrings  
by Welding Different  
Parts



Ring and Bracelet  
Joining, Making  
and Repairing



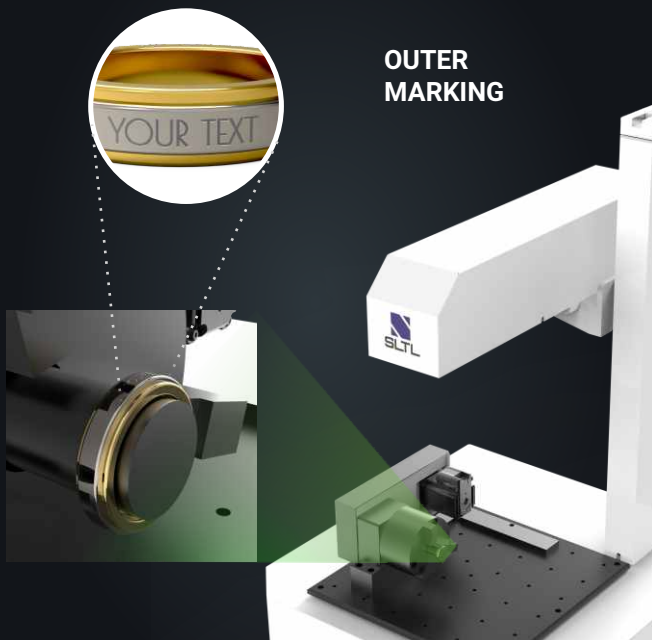
Prong Setting



Necklace Repairing

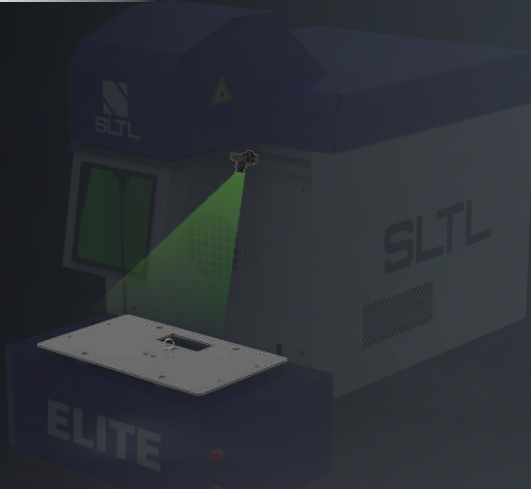


# ROTARY AUTOMATION



The three-sixty degree rotating attachment enables marking in the inner as well as the outer circumference of round jewellery. Highly flexible system which provides error-free marking and matchless accuracy for fine designs. Its best functions involve marking and engraving personalized designs, names, custom bangle designs, designer rings and a lot more. Our system is capable to mark and engrave layer by layer to extremely small area for fine design and clean look.

## TTL TECHNOLOGY



The exclusive TTL technology is developed with planned techniques to facilitate the operator an enlarged view of a work piece. The advanced technology enables close monitoring of precious jewellery to enumerate fine patterns. It is best suited to craft intricate designs. The main purpose of TTL is to allow the user to watch the jewellery closely and craft minute detailing.

## HIGHLIGHTS

PERFORMANCE AND QUALITY	INTELLIGENT FUNCTIONS	VERSATILE AND PRODUCTIVE	ECONOMICAL AND COST EFFECTIVE	ROBUST AND RELIABLE
INTUITIVE OPERATIONS	FAST AND FLEXIBLE	HIGH-QUALITY RESULTS	HIGHLY PRODUCTIVE	DIVERSE APPLICATIONS



# GROUP TODAY

## Empowering Innovation since 1989

SLTL Group is a global technological conglomerate and holds its headquarters in the capital of Gujarat, India. The Group operates its subsidiaries in six major verticals: Industrial Laser, Gems & Jewellery, Medical Devices & Equipments, RF & Microwave, Renewable Energy and Hi-tech Software Development.

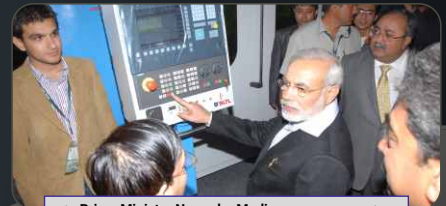
With immense technological resources, in-house DSIR approved R&D center, the team of qualified scientists, doctors, and engineers. SLTL Group have been producing ground-breaking innovations and unparalleled product quality. As a result, the company is renowned in the industries across the globe.



The Best Brand Award by Economic Times



The Best MSME Awards



The Prime Minister Narendra Modi Operating SLTLs Machine



The National Awards, In-house Research & Development



The National Awards, Indigenized Laser System



The National Awards (NRDC), Laser Invention



The National Awards, Excellence in Electronics



The National Awards, In-house Research & Development



The Best Innovation in Technology Award



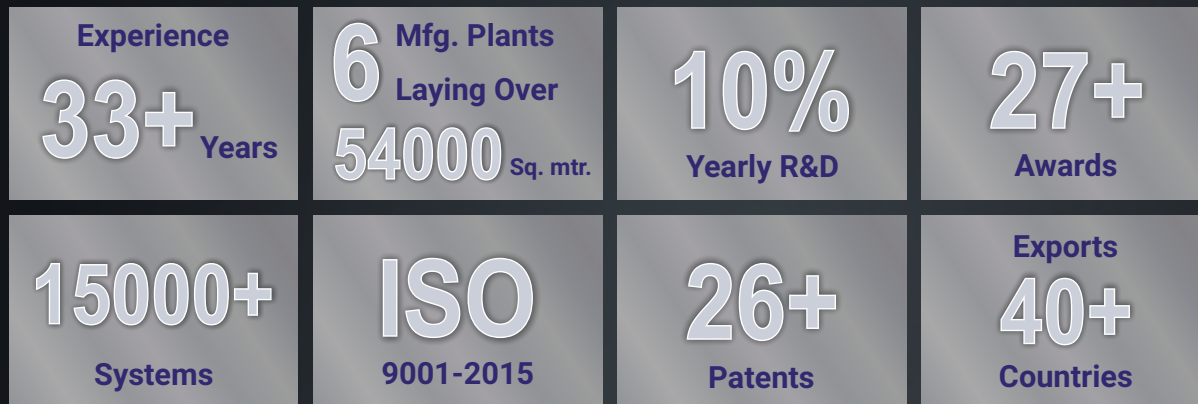


## GROUP TODAY

**LASER CUTTING**  
**MARKING**  
**WELDING**  
**HARDENING & CLADDING**  
**MICRO MACHINING**

**Diamond Processing**  
**Bending**  
**Sheet Storage**  
**Loading - Unloading**  
**Renewable Energy**  
**Medical Stents**  
**RF&Microwave**  
**Automation**

## SLTL'S STRENGTH



## WE CARE

<b>MTTR</b> <b>90% CALLS</b> <b>&lt; 8 HRS</b>	<b>MTBF</b> <b>6000 HRS BEST</b> <b>IN CLASS</b>	<b>ONLINE SERVICE</b> <b>RESPONSE 100%</b> <b>CALLS &lt; 10 MIN</b>	<b>PHYSICAL RESPONSE</b> <b>97.3% &lt; 6 HRS</b>	<b>60% REPEAT</b> <b>CUSTOMERS</b>	<b>98.7% DELIGHTED</b> <b>CUSTOMERS</b>
--	--	---	---	---------------------------------------	--



An ISO 9001:2015 Certified Company

**Sahajanand Laser Technology Ltd. (SLTL Group)**

E-30, Electronic Estate, G.I.D.C., Sector - 26,  
Gandhinagar - 382 028, Gujarat, India.

Tel : +91-79-2328-7461-63-64 Fax : +91-79-2328-7470

Cell : +91-99-2503-6495

Email : mkt@SLTL.com

[www.SLTL.com](http://www.SLTL.com)



Scan to  
Download Brochure